

Hiatal Hernia Matrix

Hiatal Hernia Repair

Patient History:

59 year old male with previous history of polyomyelitis and severe obesity, chronic history of GERD and Barrett's disease, presented with a sliding hiatal hernia with large hiatal defect. Hiatal tissue was weaker than average and reinforcement was indicated. Patient underwent a hiatal repair with Nissen funduplication using MatriStem HHM and is currently symptom free with no signs of recurrence.

Features & Benefits:

- Porcine epithelial basement membrane promotes rapid remodeling
- Several collagen types and essential proteins support natural tissue healing
- Remodel and restore surgical site effectively to normal state and function
- Two-year shelf life
- Store matrix at room temperature

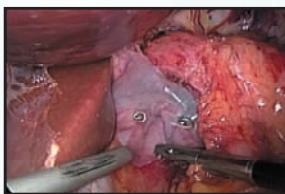
Indications:

MatriStem Hiatal Hernia Matrix is intended for implantation to reinforce soft tissue where body wall weakness exists.

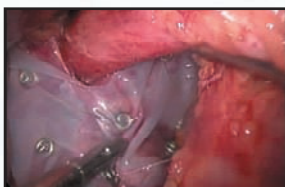
Hiatal Hernia Repair



MatriStem HHM is positioned over hiatal opening repair site.



Tacks placed posteriorly through MatriStem HHM into the diaphragm.



Tacks placed through MatriStem HHM on each side of the diaphragm.

ORDER NUMBER	SIZE	DESCRIPTION
HHM0710	7x10cm	Hiatal Hernia Matrix
IHM0710	7x10cm	Inguinal Hernia Matrix
IHM1015	10x15cm	Inguinal Hernia Matrix
VHM0515	5x15cm	Ventral Hernia Matrix
VHM0710	7x10cm	Ventral Hernia Matrix
VHM1015	10x15cm	Ventral Hernia Matrix

Rx Only